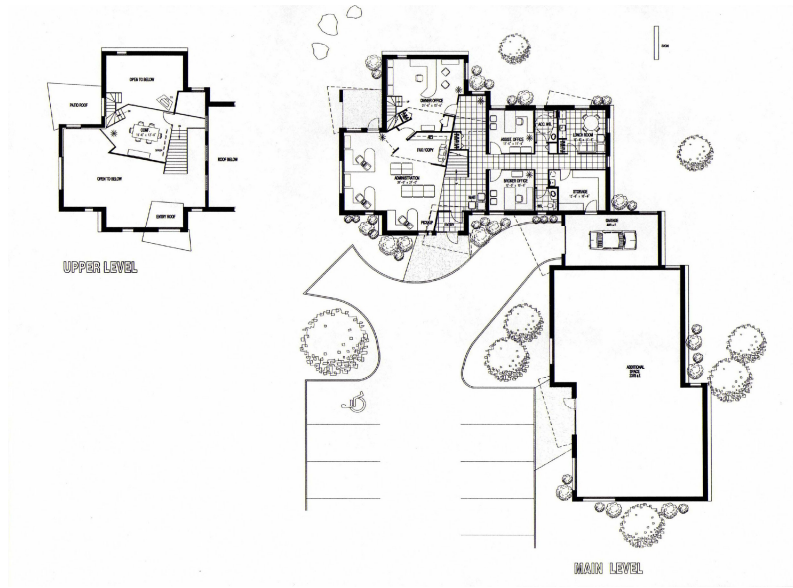


# Clairmont Financial Building

Tecumseh, Ontario, Canada - Completed in 1999



Passa Associates Architects was commissioned by Clairmont Financial to design this 6,250 sq. ft. office building as a creative representation of the owner's view of the financial industry. The sloping exterior wall elements spread at the base to anchor the building securely to the ground plane exhibiting a strong foundation for wealth development. This solid exterior appearance is balanced with deep window penetrations representing qualities of a protective and yet aggressive money management style, allowing the interior to be filled with daylight.

The double volume portion of the interior has been arranged in a radius around the owner's office with the various built forms and exterior canopies radiating outwards in sequence. The general office area allows for flexibility and is overlooked by the main conference area which is a mezzanine above the owner's office. There were special requirements for ease of staff operation and privacy while allowing for networking from satellite links to computers and monitors used extensively for client discussions.

